

Product Catalogue 04/2024

Reliable cooling in the laboratory and health sector



Blood



Pharmaceutical



Laboratory



Temperature
Documentation





Table of Contents

Pioneer and market leader with a long tradition	4
Innovative cooling – built in Germany, produced for the world	6
Constant temperatures and optimum storage safety	8
The highest standards and sustainable solutions	10
Market leader through innovation	12
Kirsch Evolution Cloud	14
Cleanroom refrigerators	16
Our three production lines	18
ULTIMATE	19
PRO ACTIVE	20
ESSENTIAL	21
Our complete product overview	22
Blood bank refrigerators and blood plasma freezers	24
Pharmaceutical refrigerators and freezers	30
Laboratory refrigerators and freezers	36
Explosion protection at the highest level	42
Temperature documentation with KIRSCH DATANET	48
Service and Support	49
Accessories	50

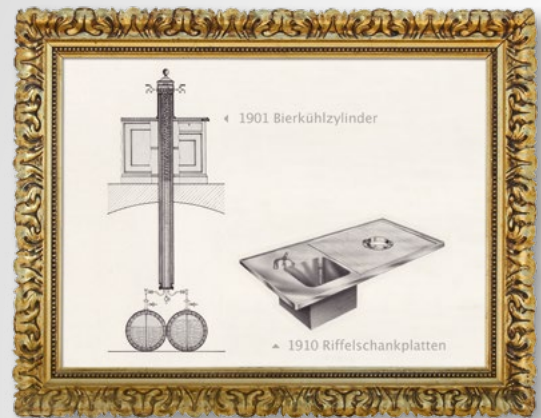
Pioneer and market leader with a long tradition

The success story of our brand started in the year 1865, the year of its inception. Since it was established, we have been a family-run company and have continued to develop and increase our know-how over generations. Based on over 150 years of experience in appliance engineering and later in medical refrigerators and freezers, we are continually optimizing and extending our product range.

We have always been synonymous with high-quality products that meet the most stringent standards and offer maximum reliability. Our customers today include pharmacies, hospitals, clinics, research institutes in the chemical and pharmaceutical industry, blood banks and laboratories in over 100 countries.

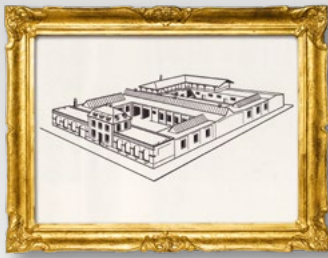


1865 Philipp Kirsch establishes his coppersmith firm



1901 Production of beer cooling cylinders and stainless steel drop-in basins





1927 Large trade business is transformed into an industrial factory



1929 Bottled beer refrigerators manufactured from galvanised steel sheet



1970s Pharmaceutical refrigerators



1956 First electrical refrigerators



2017 New plant in Willstätt



MED 100 PRO-ACTIVE



Kirsch becoming part of the Hettich Group in 2024

Innovative cooling – built in Germany, used all over the world

We take proven and reliable products to the next level. Our highly motivated development team is continuously setting high standards of product quality, functionality and efficiency.

We work in a sustainable, energy-saving and resource-efficient manner by using state-of-the-art technology and production methods. In addition, our restructured production concept speeds up product development and makes meaningful use of our capacities.

Company Kirsch is very active and engaged in DIN committees to help develop the future of cooling. For example, we have developed a new cooling technology, called magnetocaloric, which operates entirely without refrigerant. As an innovation leader in this field, we are committed to bringing magnetocalorics to the market in the nearest future.





Gerhard Müller,
Head of Design

Constant temperatures and optimum storage safety

Temperature stability is a decisive factor in the safe storage of sensitive chilled goods. Thanks to perfectly matched components, our products offer the best cooling conditions and the most accurate temperature control in the world.

This is achieved by our newly developed PRO-ACTIVE controller with two standard built-in PT-1000 sensors.

Temperature deviations in the interior can therefore be minimised to just 1.5 °C from the warmest to the coldest point (confirmed by a DIN measurement, available for models BL, MED, LABO and LABEX).

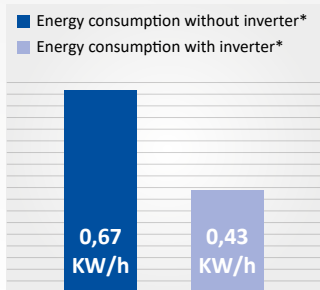
The product monitoring and early pro-active warning system allows for convenient, stress free handling and fast response times which further increases safety. To guarantee this, every single one of our devices is precisely calibrated and tested in a trial run lasting several hours during final inspection. Another important benefit – in addition to the electronic control's high degree of reliability – is the reduction of power consumption of up to 60% compared to previous controllers.



Inverter technology

Reduced energy consumption and durability are at the centre of this innovative system.

It lowers your operating costs and protects the environment. Thanks to the outstanding temperature stability, your refrigerated goods remain safely cooled at all times - even when the door is opened and after defrosting. Benefit from low-noise operation and low maintenance requirements.



*Example values from the Med 100

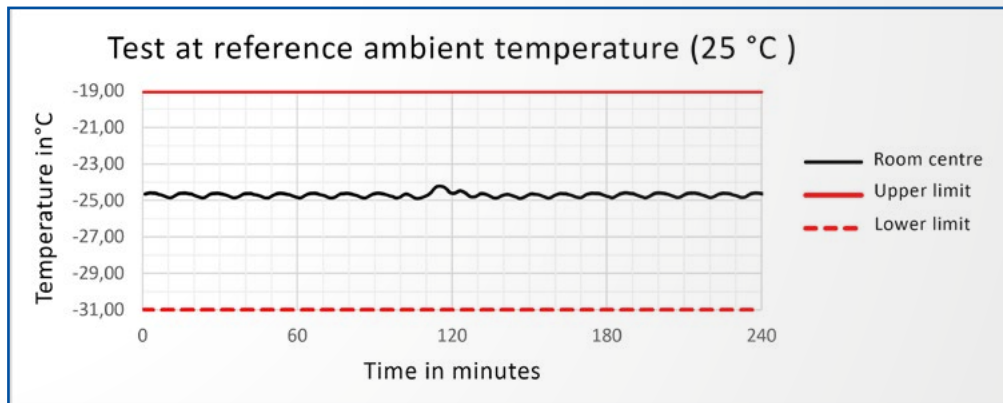
Your Advantages

- Lower energy consumption
- temperature stability
- faster cooling

GMP-compliant and fulfilment of DIN 13277

Our newly developed cooling machines enable defrosting outside the cooling chamber. This allows us to achieve constant cooling temperatures even during defrosting, meaning that the entire cooling chamber can be qualified and your refrigerated goods are always perfectly stored in accordance with DIN 13277.

Optimised temperature behaviour and high temperature stability



Your Advantages

- Perfect cooling temperature even during defrosting (see diagram)
- Powerful Cooling machine - e.g. pull-down from +25°C to -25°C in 65 minutes
- Durable inverter technology with 50 and 60 Hertz
- Easy to service - cooling machine is a plug-in unit

The highest standards and sustainable solutions

Quality assurance made easy: KIRSCH temperature documentation enables complete and precise recording and evaluation of the cooling temperature, which is also required as proof for official inspections. With the Kirsch EVOLUTION CLOUD, you don't even need an on-site network to guarantee functionality. Our systems enable the live transmission of data, alarm forwarding to the workplace and the direct sending of alerts by e-mail and SMS. Thanks to automatic data capture, our customized digital solutions are extremely resource-efficient. And more importantly: if in doubt, they serve as a reliable source of information to determine whether a certain chilled good can still be used. Our ISO-certified KIRSCH refrigerators and freezers are ideally designed especially for areas with the strictest cooling requirements. We use stable processes to ensure maximum safety and quality of our devices and services.

In addition to complying with the highest quality standards, we also consider sustainability to be a very important topic. All our products are designed for a long service life. This helps to preserve our planet's natural resources and means cost savings for our customers. At the same time, we have been able to permanently reduce power consumption as well as our noise emissions to far below the limit. With these measures, we are promoting the sustainable development of Philipp Kirsch GmbH, which is at the core of our company philosophy.





ISO certification ✓

Explosion protection ✓

Medical device certification (MDC) ✓

Fulfills the DIN standard ✓

GMP-compliant ✓

Temperature documentation ✓

Market leader through innovation

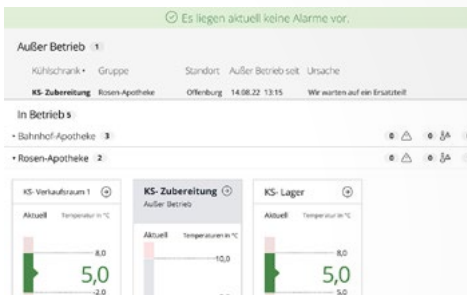


Dr. Jochen Kopitzke,
CEO



Cleanroom refrigerators - installation without enclosure

Every cleanroom must be planned exactly according to the requirements. We reduce your workload thanks to our new cleanroom concept with HEPA filter. We will be happy to advise you on our project-specific and customised solutions. You can find more information about our cleanroom concept on pages 16 and 17.



KIRSCH EVOLUTION CLOUD - reliable, independent, smart

In the pharmaceutical and healthcare industries, there are strict regulations and standards that define the temperature conditions for the storage of sensitive refrigerated goods. These regulations are necessary to ensure that the stored products are kept under optimal conditions throughout their entire life cycle, from production to transport and storage in pharmacies, doctors' offices or hospitals. Our KIRSCH EVOLUTION CLOUD helps you to monitor the temperature of your refrigerated goods. Find out more on the next page.



Service and support - please feel free to give us a call

KIRSCH offers you competent help with all your daily questions. Do you need a spare part for a KIRSCH refrigerator? Our comprehensive services offer you expert support.

We also offer you a platform for secure remote access and remote maintenance via Teamviewer. We also provide service videos on our website that can help you with the configuration of your devices and other important topics. Further information on the topic of SERVICE such as briefings, qualifications, etc., can be found on page 49

Relieve in the daily work routine

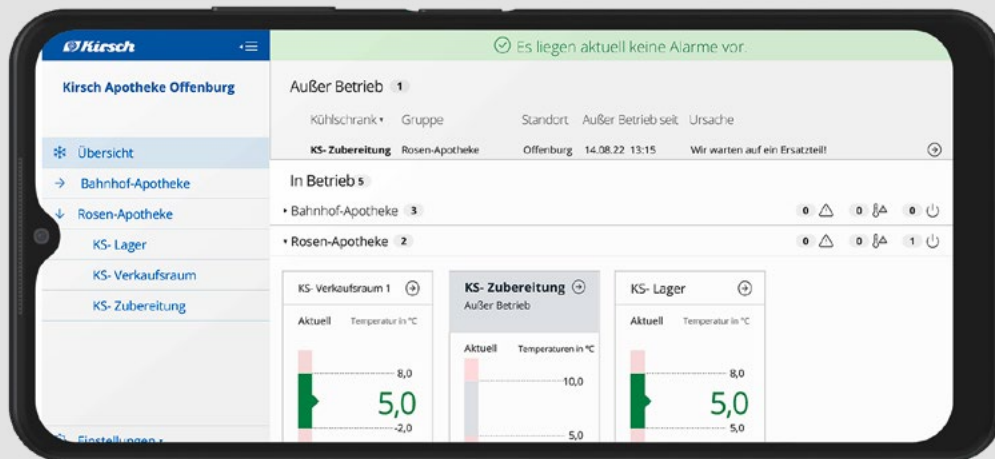
Complete temperature documentation is crucial in the process of quality assurance. The manual data collection is usually time-consuming and often inaccurate.

Our new KIRSCH EVOLUTION CLOUD takes care of this work for you, giving you more time to focus on more important tasks.

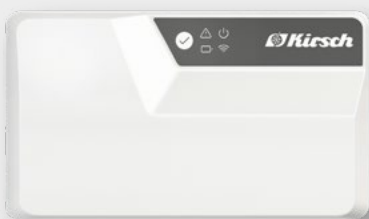
The optimal storage of your products and therefore the safety of the patients is our highest priority. With the KIRSCH EVOLUTION CLOUD, we guarantee a complete, reliable, and convenient solution for temperature documentation with automatic reporting.

In case of temperature deviations, the system will notify you via E-mail and/or SMS. Thanks to an integrated battery, this function remains active even in the event of a power failure. At the same time, this offers the possibility for mobile use, e.g. in transport boxes.

Reliable, independent,
smart. The KIRSCH
EVOLUTION CLOUD.



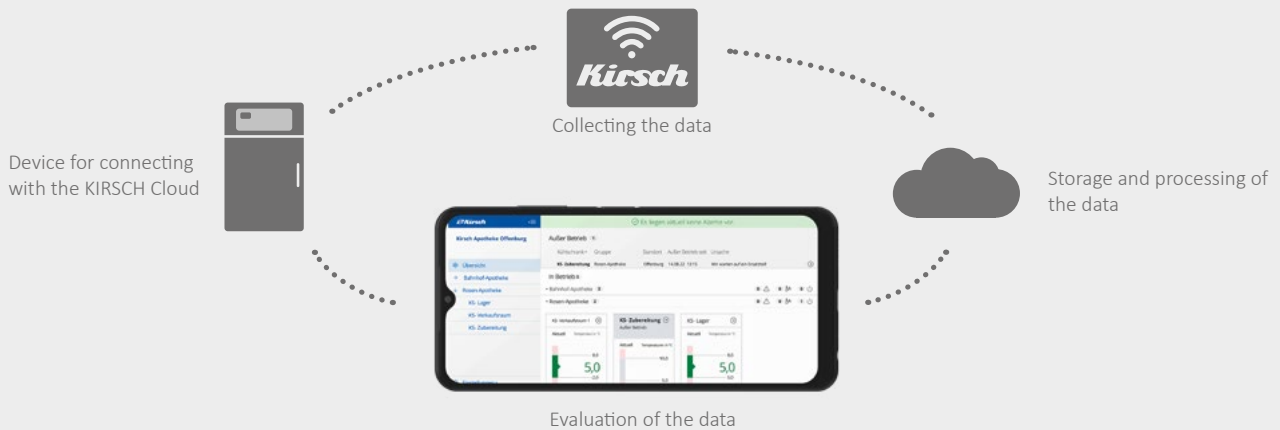
KIRSCH EVOLUTION MODUL



The KIRSCH EVOLUTION MODUL is the reliable connection between the areas to be monitored and the cloud.

An IoT SIM card, a data storage and a PT1000 sensor required for recording and data transmission, are already included in the scope of delivery.

Maximum storage safety through optimal connectivity



Your advantages at a glance

RELIABLE

- Alarm in case of deviation via E-mail and/or SMS
- Alarm chain with holiday function
- Temperature control, independent of location, possible at any time via smartphone, tablet or PC
- Additional integrated data storage for up to 30 days
- Complete temperature documentation

INDEPENDENT

- Network-independent, no LAN or WLAN connection required
- Data transmission via integrated IoT SIM card
- Easy retrofitting to existing or third-party devices
- Battery operation in case of power failure
- Mobile use

SMART

- Automatic reporting enables easy data backup and verification
- All relevant data at a glance at all time through access on smartphone, tablet or PC
- Simple and intuitive operation thanks to modern menu navigation
- User administration with assignment of rights
- Logbook for tracking all changes and alarms with download function
- Offline function for service, maintenance or cleaning

Technical Data

Power supply	230 V +/- 10%, 50/60 Hz	Dimension	212 x 137 x 47 mm (BxHxT)
Power consumption	12 W	Measuring range	-200°C bis +200°C Tolerance at 25°C +/- 0,5K and +/- 0,5% from measuring range
Ambient Temperature	0°C bis +45°C	Temperature sensor	PT1000 measuring range -50°C bis +110°C (extended temperature range, possible via optional sensor)
Protection type	IP54		
Protection class	II		
Weight	ca. 530 g		

We will gladly assist you with any questions regarding the setup of the KIRSCH EVOLUTION CLOUD. Please contact us: temperaturdoku@kirsch-medical.de.

Kirsch cleanroom refrigerator





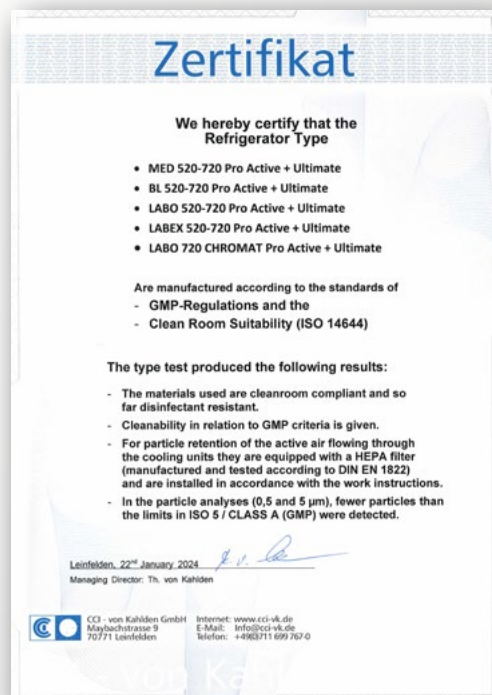
Kirsch cleanroom refrigerator

Welcome to the future of laboratory refrigeration with Kirsch cleanroom refrigerators - the perfect stand-alone solution for your highly sensitive samples and materials. Our refrigerators combine top performance with unrivalled cleanroom suitability. Thanks to the integrated HEPA filter system, our refrigerators provide excellent air purification, ensuring a contamination-free environment and preserving the integrity of your samples. Our cleanroom concept has been tested by independent specialists and confirmed with a certificate.

Experience the flexibility and reliability of our stand-alone solution, giving you the freedom to place the refrigerator where it is needed without compromising on performance. With Kirsch cleanroom refrigerators, you are well equipped to take your research to the next level.

Your Advantages

- Stand-alone solution: No on-site costs for enclosure of the appliance device or extraction system
- HEPA filter (removes 99.95% of particles)
- Stainless steel outer housing
- Condensation tray for manual emptying
- Disinfectant resistance tested
- GMP-compliant (with certificate)



We are pleased to present you
our three product lines

ULTIMATE

PRO*ACTIVE*

ESSENTIAL

ULTIMATE



BL 520 ULTIMATE



- Elegant glass design
- Simple operation via a capacitive touch display (also with laboratory gloves)
- Access control with a log
- Graphical display of the temperature curve and min/max temperature
- Digital data documentation with KIRSCH Datamet software
- Intuitive help with alarm messages and troubleshooting in plain text
- Operation via remote control is possible
- Includes the benefits of the PRO-ACTIVE line

PROACTIVE



MED 520 PRO-ACTIVE



- Reduction of power consumption by up to 60 % compared to previous controllers
- Tamper-proof thanks to key switch
- Data storage for USB export
- Fast response time to imminent malfunctions thanks to pro-active alarming
- Reduction of temperature deviation
- Highest storage safety due to PT1000 monitoring
- Optimally matched components
- The benefits of the ESSENTIAL line include

ESSENTIAL



- Your entry into KIRSCH quality
- Maximum reliability
- Durable
- Temperature stability
- Flexibility
- Maximum safety

Discover our entire product range



flexible

efficient

sustainable



Blood bank
refrigerators and
blood plasma freezers



Pharmaceutical
refrigerators and freezers



Laboratory refrigerators
and freezers



Temperature
documentation

BLOOD

PHARMACEUTICALS

LABORATORY

DOCUMENTATION

Blood bank refrigerators compliant with DIN 58371

Blood plasma freezers compliant with DIN 58375

- Blood bank refrigerators and blood plasma freezers, certified according to Regulation (EU) 2017/745 (MDR). In order to offer patients and users of our devices the highest possible level of protection, we implemented that regulation before the end of the transition period in 2028.
- Medical device class IIa according to regulation (EU) 2017/745 (MDR)
- Blood reserves are stored at +4°C compliant with DIN 58371
- Blood plasma is stored at at least -31 °C compliant with DIN 58375

(Sold only through authorised dealers)



*



FROSTER BL 180 PRO-ACTIVE



BLOOD



FROSTER BL 330 PRO-ACTIVE



BL 520 ULTIMATE

Blood bank refrigerators

Reg. 2017/745 EU (MDR),
Class IIa



ULTIMATE PRO-ACTIVE	– BL 100 PRO-ACTIVE	– BL 176 PRO-ACTIVE	BL 300 ULTIMATE BL 300 PRO-ACTIVE
PC-KIT-NET	Standard on all ULTIMATE,		optional on all PRO-ACTIVE
Capacity	95 l	170 l	280 l
Temperature setting	+4 °C	+4 °C	+4 °C
Voltage	220 - 240 V/50 Hz	220 - 240 V/50 Hz	220 - 240 V/50 Hz
Refrigerating machine for 60 Hz operation	*	*	*
Power consumption (in watts)	92	120	95
Normal consumption (in kWh/24 h)	0.64	1.22	0.63
Permitted ambient temperature	from +10 °C to +38 °C	from +10 °C to +38 °C	from +10 °C to +38 °C
Heat emission (max. in watts)	195	187	170
Weight	net 48 kg/gross 57 kg	net 77 kg/gross 87 kg	net 81 kg/gross 93 kg
Exterior dimensions (incl. distance from wall and door handle) (W x D x H in cm)	54 x 54 x 82	70 x 77 x 122	68 x 72 x 131.5
Usable dimension (W x D x H in cm)	39.5 x 34 x 34	51 x 34.5 x 46	49 x 39 x 92 (usable depth at the bottom 15 cm less)
Exterior dimensions with door open at 90° (W x D in cm)	54 x 106	70 x 136	67 x 133
Drawer inner dimensions (W x D x H in cm)	39.5 x 34 x 10	51 x 34.5 x 10	49 x 39 x 10 top drawers 51 x 31 x 10 bottom drawer
Capacity per drawer (500 ml blood bags)	30	38	43
Max. load: drawer	25 kg	50 kg	50 kg
Noise emission (for Ecoool R600a)	40.5 dB (A)	38.6 dB (A)	40.3 dB (A)
Automatic defrost	✓	✓	✓
Defrost water container for manual draining	optional	optional	optional
Temperature deviation Δ T compliant with DIN 58371 without defrosting	0.9 °C	0.3 °C	0.8 °C
Re-circulating air cooling	✓	✓	✓
Alerts in case of power failure	✓	✓	✓
Glass door with lock	optional	–	optional
Equipped with castors	optional	optional	optional
External housing – chrome-nickel steel 4301	–	–	–
Tabletop	optional	–	–
Door coupling fitting	optional	optional	optional
Refrigerating machine fan, built-in	✓	optional	optional
LED lighting strip mounted on the roof/on the side wall of the interior	optional/–	optional/–	optional/–
Adjustment gibs/variable interior arrangement	–	–	✓
Aluminium drawer with roller runners (standard/maximum)	2/2	2/3	4/5
Stainless steel drawer with roller runners	–	optional	optional
Drawer insert in a set	–	optional	optional
Vario Support	–	–	optional
Shelf with overlays or rails	–	–	optional
Wire basket with rails	–	–	–

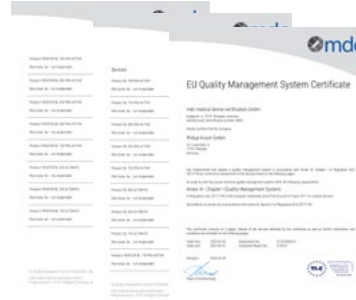
*On request



BL 520 ULTIMATE
BL 520 PRO-ACTIVE

BL 720 ULTIMATE
BL 720 PRO-ACTIVE

500 l	700 l
+4 °C	+4 °C
220 - 240 V/50 Hz	220 - 240 V/50 Hz
*	*
250	250
1.5	1.56
from +10 °C to +38 °C	from +10 °C to +38 °C
554	554
net 138 kg/gross 161 kg	net 164 kg/gross 190 kg
77 x 76 x 195.5	77 x 98 x 195.5
56 x 39.5 x 92	56 x 60.5 x 129
77 x 144	77 x 166
56 x 39.5 x 10	56 x 60.5 x 10
49	81
50 kg	50 kg
41.2 dB (A)	41.8 dB (A)
✓	✓
optional	optional
1.1 °C	1.2 °C
✓	✓
✓	✓
optional	optional
✓	✓
optional	optional
–	–
optional	optional
✓	✓
–/optional	–/optional
✓	✓
5/8	5/8
optional	optional
optional	optional
optional	optional
optional	optional
optional	optional



MDR-certified Medical devices

Medical devices class IIa, certified according to Regulation (EU) 2017/745 (MDR) by mdc medical device certification GmbH (CE0483)*.



Future-proof & reliable

With the validity of the MDR certificate until March 2027, we guarantee the uninterrupted supply of the blood cooling devices.



Reliable blood storage

By certifying our blood cooling devices we contribute to better protection of the public health and patient safety.



Blood bank refrigerators

More information can be found on our website.



*MDR certificate

You will find the certificate on our website.

Blood plasma freezers

Reg. 2017/745 EU (MDR),
Class IIa



Discontinued model



Discontinued model



ULTIMATE	–	–	FROSTER BL 330 ULTIMATE
PRO-ACTIVE	FROSTER BL 178 PRO-ACTIVE	FROSTER BL 180 PRO-ACTIVE	FROSTER BL 330 PRO-ACTIVE
PC-KIT-NET	Standard on all ULTIMATE,		optional on all PRO-ACTIVE
Capacity	170 l	170 l	300 l
Temperature setting	approx. -32 °C	approx. -41 °C	approx. -32 °C
Voltage	220 - 240 V/50 Hz	220 - 240 V/50 Hz	220 - 240 V/50 Hz
Refrigerating machine for 60 Hz operation	*	*	*
Power consumption (in watts)	500	453	550
Normal consumption (in kWh/24 h)	4.88	6.54	6.59
Permitted ambient temperature	from +10 °C to +32 °C	from +10 °C to +32 °C	from +10 °C to +32 °C
Heat emission (max. in watts)	633	489	713
Weight	net 111 kg/gross 124 kg	net 100 kg/gross 110 kg	net 120 kg/gross 135 kg
Overall dimensions (including distance from wall and door handle) (W x D x H in cm)	70 x 77 x 122	70 x 77 x 122	74 x 78 x 166/74 x 77 x 159
Usable dimensions (W x D x H in cm)	51 x 34.5 x 46	52 x 32 x 46	54 x 37 x 80
Exterior dimensions with door open at 90° (W x D in cm)	70 x 136	70 x 136	74 x 142
Drawer inner dimensions (W x D x H in cm)	51 x 34.5 x 10	52 x 32 x 15.5	54 x 37 x 10
Capacity per drawer (plasma cartons W x D x H: 13.5 x 2x5 x 16.5 in cm)	45	44	52
Max. load: drawer	50 kg	50 kg	50 kg
Noise emission	50.3 dB (A)	51.2 dB (A)	50.4 dB (A)
Automatic defrost	✓	✓	✓
Defrost water container for manual draining	–	–	optional
Temperature deviation Δ T compliant with DIN 58375 without defrosting	1.3 °C	1.7 °C	1.5 °C
Re-circulating air cooling	✓	✓	✓
Alerts in case of power failure	✓	✓	✓
Equipped with castors	optional	optional	optional
External housing – chrome-nickel steel 4301	–	–	–
Refrigerating machine, water-cooled*	–	–	–
LED lighting strip mounted on the roof/on the side wall of the interior	optional/–	–/–	optional/–
Adjustment gibs/variable interior arrangement	–	–	✓
Aluminium drawer with roller runners (standard/maximum)	3/3	–	4/5
Stainless steel drawer with roller runners (standard/maximum)	optional	3/3	optional
Drawer insert in a set	optional	optional	optional
Vario Support	–	–	optional
Shelf with overlays or rails	–	–	optional
Wire basket with rails	–	–	optional

*On request



Discontinued model



FROSTER BL 530 ULTIMATE	–	FROSTER BL 730 ULTIMATE
FROSTER BL 530 PRO-ACTIVE	FROSTER BL 650 PRO-ACTIVE	FROSTER BL 730 PRO-ACTIVE

Standard on all ULTIMATE, optional on all PRO-ACTIVE

500 l	650 l	700 l
approx. -32 °C	approx. -41 °C	approx. -32 °C
220 - 240 V/50 Hz	220 - 240 V/50 Hz	220 - 240 V/50 Hz
*	–	*
740	990	790
10.81	14.32	11.1
from +10 °C to +32 °C	from +10 °C to +32 °C	from +10 °C to +32 °C
827	1010	860
net 168 kg/gross 191 kg	net 220 kg/gross 260 kg	net 188 kg/gross 214 kg
77 x 76 x 195.5	83 x 102 x 197	77 x 97 x 195.5
56 x 39.5 x 129	59 x 56 x 114	56 x 60.5 x 129
77 x 144	86 x 177	77 x 166
56 x 39.5 x 10	59 x 56 x 22 top drawer; 59 x 62 x 22 bottom four drawers	56 x 60.5 x 10
60	96	92
50 kg	50 kg	50 kg
51.5 dB (A)	62.3 dB (A)	49.7 dB (A)
✓	✓	✓
optional	–	optional
1.68 °C	1.77 °C	1.68 °C
✓	✓	✓
✓	✓	✓
✓	optional	✓
optional	–	optional
optional	–	optional
–/optional	–/–	–/optional
✓	–	✓
5/8	–	5/8
optional	5/5	optional
optional	optional	optional
optional	–	optional
optional	–	optional
optional	–	optional

BLOOD



Blood Plasma Freezers

More information can be found on our website.

Pharmaceutical refrigerators* and freezers

*compliant with DIN 13277 (replaces DIN 13221)

- Safe storage of pharmaceuticals and vaccines
- High-performance cooling machine for maximum temperature constancy even if the door has been opened for a longer period of time
- Data storage for USB export
- Aluminium interior container
- KIRSCH ergonomics concept
- High energy efficiency
- Environmentally friendly refrigerant R600a
- Tamper-proof thanks to key switch
- Easy access
- Height-adjustable drawers or shelves
- Automatic defrost



MED 100 PRO-ACTIVE



MED 340 PRO-ACTIVE



MED 520 ULTIMATE

PHARMACEUTICALS

Plastic drawers are currently available only in black color.

Pharmaceutical refrigerators

compliant with DIN 13277



ULTIMATE	–	–	–
PRO-ACTIVE	–	MED 100 PRO-ACTIVE	–
ESSENTIAL	ESSENTIAL MED 85 DIN	–	ESSENTIAL MED 125
PC-KIT-NET	standard on all ULTIMATE, optional on all PRO-ACTIVE, not available on the ESSENTIAL		
compliant with DIN 13277	✓	✓	✓
Capacity	80 l	95 l	120 l
Temperature setting	approx. +2 to +15 °C	approx. 2 to +15 °C	approx. +2 to +15 °C
Voltage	220 - 240 V/50 Hz	220 - 240 V/50 and 60 Hz	220 - 240 V/50 Hz
Refrigerating machine for 60 Hz operation	–	✓	–
Power consumption (in watts)	112	30	115
Normal consumption (in kWh/24 h)	0.69	0.43	1.28
Permitted ambient temperature	from +10 °C to +38 °C	from +10 °C to +38 °C	from +10 °C to +38 °C
Heat emission (max. in watts)	172	100	183
Weight	net 34 kg/gross 40 kg	net 47 kg/gross 56 kg	net 43 kg/gross 50 kg
Exterior dimensions (incl. distance from wall and door handle) (W x D x H in cm)	48 x 51 x 74	54 x 54 x 82	54 x 53.5 x 81
Usable dimensions (W x D x H in cm)	34 x 32 x 63 (usable depth at the bottom 15 cm less)	40.8 x 32 x 34	40.8 x 32 x 59 (usable depth at the bottom 15 cm less)
Exterior dimensions with door open at 90° (W x D in cm)	47 x 96	54 x 105.5	54 x 105.5
Drawer inner dimensions (W x D x H in cm)	34 x 32 x 5.6	40.8 x 32 x 5.6	40.8 x 32 x 5.6
Maximum load: drawer/shelf	9.5 kg/25 kg	13 kg/25 kg	13 kg/25 kg
Noise emission (for Ecoool R600a)	49 dB (A)	44 dB (A)	42 dB (A)
Automatic defrost	✓	✓	✓
Defrost water container for manual draining	optional	optional	optional
Temperature deviation Δ T compliant with DIN 13277 without defrosting	0.8 °C	0.48 °C	1.5 °C
Re-circulating air cooling	✓	✓	✓
Alerts in case of power failure	✓	✓	✓
Glass door with lock	–	optional	–
Glass door	–	–	optional (no longer DIN 13277-compliant)
Equipped with castors	optional	optional	optional
Tabletop	–	optional	optional
Decorative frame	optional	optional	optional
Digital temperature display prepared for external installation into furniture front	optional	✓	optional
Door coupling fitting	optional	optional	optional
Refrigerating machine fan, built-in	optional	✓	optional
Cleanroom design with special air routing	–	✓	–
LED lighting strip mounted on the roof of the interior	–	optional	optional
Plastic drawer incl. drawer insert (standard/maximum)	3/3	3/3	3/3
Plastic drawer with roller runners + drawer insert (standard/maximum)	–	–	–
Vario Support	–	–	–
Top drawer is lockable	optional	–	optional
Shelf	1	1	1
Shelf with overlays/rails	–/–	–/–	–/–



MED 126 PRO-ACTIVE	MED 200 PRO-ACTIVE	MED 288 ULTIMATE MED 288 PRO-ACTIVE	MED 340 ULTIMATE MED 340 PRO-ACTIVE
standard on all ULTIMATE, optional on all PRO-ACTIVE, not available on the ESSENTIAL			
✓	✓	✓	✓
120 l	170 l	280 l	330 l
approx. +2 to +15 °C	approx. 2 to +15 °C	approx. 2 to +15 °C	approx. +2 to +15 °C
220 - 240 V/50 Hz	220 - 240 V/50 and 60 Hz	220 - 240 V/50 and 60 Hz	220 - 240 V/50 and 60 Hz
–	✓	✓	✓
105	30	38.7	39.9
0.58	0.53	0.59	0.51
from +10 °C to +38 °C	from +10 °C to +38 °C	from +10 °C to +38 °C	from +10 °C to +38 °C
183	171	173	165
net 49 kg/gross 58 kg	net 69 kg/gross 80 kg	net 75 kg/gross 87 kg	net 100 kg/gross 114 kg
54 x 53.5 x 88.8	54 x 55.7 x 122	67 x 72 x 132	67 x 66 x 189
40.8 x 32 x 59 (usable depth at the bottom 15 cm less)	38 x 34 x 72	50.4 x 32 x 92 (usable depth at the bottom 15 cm less)	50.4 x 32 x 116
54 x 105.5	54 x 105	67 x 130	67 x 124
40.8 x 32 x 5.6	38 x 34 x 5.6	50.4 x 32 x 5.6	50.4 x 32 x 5.6/–
13 kg/25 kg	13 kg/25 kg	16 kg/40 kg	16 kg/40 kg
40 dB (A)	49 dB (A)	41 dB (A)	39 dB (A)
✓	✓	✓	✓
optional	optional	optional	optional
1.5 °C	1.38 °C	1 °C	1.75 °C
✓	✓	✓	✓
✓	✓	✓	✓
–	–	optional	optional
optional (no longer DIN 13277-compliant)	–	–	–
optional	optional	optional	optional
–	optional	–	–
optional	optional	optional	optional
✓	✓	–	–
optional	optional	optional	optional
optional	✓	optional	optional
–	–	–	–
optional	optional	optional	optional
3/3	–	–	–
–	4/5	5/8	9/12
–	–	optional	optional
optional	–	optional	optional
1	–	–	–
–/–	1/–	optional/optional	optional/optional

Pharmaceutical refrigerators* and freezers

*compliant with DIN 13277



ULTIMATE	MED 468 ULTIMATE	MED 520 ULTIMATE	MED 720 ULTIMATE
PRO-ACTIVE	MED 468 PRO-ACTIVE	MED 520 PRO-ACTIVE	MED 720 PRO-ACTIVE
ESSENTIAL	–	–	–
PC-KIT-NET	Standard on all ULTIMATE, optional on all PRO-ACTIVE, not available on the ESSENTIAL		
compliant with DIN 13277	✓	✓	✓
Capacity	460 l	500 l	700 l
Temperature setting	approx. 2 to +15 °C	approx. +2 to +15 °C	approx. 2 to +15 °C
Voltage	220 - 240 V/50 and 60 Hz	220 - 240 V/50 and 60 Hz	220 - 240 V/50 and 60 Hz
Refrigerating machine for 60 Hz operation	✓	✓	✓
Power consumption (in watts)	90	66	60
Normal consumption (in kWh/24 h)	0.77	0,82	0,85
Permitted ambient temperature	from +10 °C to +38 °C	from +10 °C to +38 °C	from +10 °C to +38 °C
Heat emission (max. in watts)	207	273	269
Weight	net 132 kg/gross 146 kg	net 145 kg/gross 168 kg	net 164 kg, gross 190 kg
Overall dimensions (including distance from wall and door handle) (W x D x H in cm)	74 x 77.5 x 189	77 x 76 x 195.5	77 x 98 x 195.5
Usable dimensions (W x D x H in cm)	57.3 x 43 x 116	57.3 x 39 x 129	56.3 x 59.5 x 129
Exterior dimensions with door open at 90° (W x D in cm)	74 x 142	77 x 144	77 x 165
Drawer/shelf inner dimensions (W x D x H in cm)	57.3 x 43 x 5.6/–	57.3 x 39 x 5.6/–	56.3 x 59.5 x 5.6/–
Maximum load: drawer/shelf	24 kg/40 kg	24 kg/40 kg	24 kg/40 kg
Noise emission (for Ecool R600a)	40 dB (A)	42 dB (A)	42 dB (A)
Automatic defrost	✓	✓	✓
Defrost water container for manual draining	optional	–	–
Temperature deviation Δ T compliant with DIN 13277 without defrosting	1.5 °C	1.6 °C	1.8 °C
Re-circulating air cooling	✓	✓	✓
Alerts in case of power failure	✓	✓	✓
Glass door with lock	optional	optional	optional
Equipped with castors	optional	✓	✓
External housing - chrome-nickel steel 4301	–	optional	optional
Tabletop	–	–	–
Decorative frame	optional	optional	optional
Digital temperature display prepared for external installation into furniture front	–	–	–
Door coupling fitting	optional	optional	optional
Refrigerating machine fan, built-in	✓	✓	✓
Cleanroom design with special air routing	✓	–	–
Cleanroom version with HEPA filter, stainless steel outer housing	–	✓	✓
LED lighting strip mounted on the side wall of the interior	optional	optional	optional
Plastic drawer incl. drawer insert (standard/maximum)	–	–	–
Plastic drawer with roller runners + drawer insert (standard/maximum)	10/12	12/12	12/12
Top drawer is lockable	optional	optional	–
Vario Support	optional	optional	optional
Shelf	–	–	–
Shelf with overlays or rails	optional	optional	optional
Wire basket with rails	optional	optional	optional

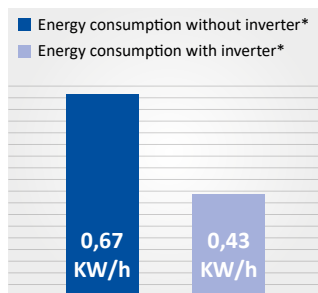


ESSENTIAL FROSTER 70	FROSTER MED 95 PRO-ACTIVE
–	–
–	–
70 l	95 l
approx. -15 to -22 °C	approx. -5 to -25 °C
220 - 240 V/50 Hz	220 - 240 V/50 Hz
–	–
124	123
1.41	1.33
from +10 °C to +32 °C	from +10 °C to +32 °C
129	162
net 35 kg/gross 42 kg	net 50 kg/gross 59 kg
47 x 51 x 74	54 x 54 x 82
35 x 31 x 60 (usable depth at the bottom 15 cm less)	43 x 36 x 34
47 x 96	54 x 105.5
–/35 x 31 cm above, 35 x 20 cm below	40.8 x 32 x 5.6 /43 x 36 cm
–/25 kg	13 kg/25 kg
39.9 dB (A)	38 dB (A)
–	–
–	✓
3.3 °C	1,6 °C
–	–
–	✓
–	–
optional	optional
–	–
–	optional
optional	optional
–	✓
optional	optional
optional	✓
–	✓
–	–
–	–
–	1/3
–	–
–	–
–	–
4	2
–	–
–	–



Cleanroom

HEPA-Filter solutions for use in cleanroom environments.



Inverter Technology

Thanks to this new technology, our refrigerators now consume up to 50% less energy.



Pharmaceutical refrigerators

More information can be found on our website.



Pharmaceutical freezers

More information can be found on our website.

Laboratory refrigerators* and freezers

*compliant with DIN 13277 (replaces DIN 13221)
also with explosion-proof interior

- Safe storage of pharmaceuticals and vaccines
- High-performance cooling machine for maximum temperature constancy even if the door has been opened for a longer period of time
- Data storage for USB export
- KIRSCH Ergonomics Concept
- Tamper-proof thanks to key switch
- Aluminium interior container
- High energy efficiency
- Environmentally friendly, high-pressure foam insulation
- Environmentally friendly refrigerant R600a
- Easy access
- Height-adjustable drawers or shelves
- Automatic defrost

(depending on the model)



LABO 100 PRO-ACTIVE





LABO 340 PRO-ACTIVE
(with optional accessories)



LABO 720 CHROMAT ULTIMATE
(with optional accessories)

Laboratory refrigerators

*compliant with DIN 13277



ULTIMATE	—	—	—
PRO-ACTIVE	LABO 100 PRO-ACTIVE	—	LABO 126 PRO-ACTIVE
ESSENTIAL	—	ESSENTIAL 125	—
PC-KIT-NET	Standard on all ULTIMATE, optional on all PRO-ACTIVE, not available on the ESSENTIAL		
compliant with DIN 13277	✓	—	✓
Capacity	95 l	120 l	120 l
Temperature setting	approx. 2 to +15 °C	approx. +2 to +15 °C	approx. +2 to +15 °C
Voltage	220 - 240 V/50 and 60 Hz	220 - 240 V/50 Hz	220 - 240 V/50 Hz
Refrigerating machine for 60 Hz operation	✓	—	—
Power consumption (in watts)	30	125	100
Normal consumption (in kWh/24 h)	0,328	0.55	0.61
Permitted ambient temperature	from +10 °C to +38 °C	from +10 °C to +38 °C	from +10 °C to +38 °C
Heat emission (max. in watts)	100	123	181
Weight	net 44 kg/gross 53 kg	net 39 kg/gross 48 kg	net 49 kg/gross 58 kg
Overall dimensions (including distance from wall and door handle) (W x D x H in cm)	54 x 54 x 82	54 x 53.5 x 81	54 x 53.5 x 88.8
Usable dimensions (W x D x H in cm)	43 x 33 x 34	43 x 33 x 59 (usable depth at the bottom 15 cm less)	43 x 33 x 59 (usable depth at the bottom 15 cm less)
Exterior dimensions with door open at 90° (W x D in cm)	54 x 106	54 x 106	54 x 106
Drawer/shelf inner dimensions (W x D x H in cm)	40.8 x 32 x 5.6/ 43 x 33	—/43 x 33	—/43 x 33
Maximum load: drawer/shelf	13 kg/25 kg	13 kg/25 kg	13 kg/25 kg
Noise emission (for Ecool R600a)	44 dB (A)	41.4 dB (A)	38 dB (A)
Automatic defrost	✓	✓	✓
Defrost water container for manual draining	optional	optional	optional
Temperature deviation Δ T compliant with DIN 13277 without defrosting	1.76 °C	2.25 °C	1.3 °C
Re-circulating air cooling	✓	—	✓
Alerts in case of power failure	—	optional	—
Glass door with lock/glass door	optional/—	—/optional	—/optional
Equipped with castors	optional	optional	optional
External housing - chrome-nickel steel 4301	—	—	—
Tabletop	optional	optional	—
Digital temperature display prepared for external installation into furniture front	✓	optional	optional
Door coupling fitting/decorative frame	optional	optional	optional
Refrigerating machine fan, built-in	✓	optional	optional
Cleanroom design with special air routing	✓	—	—
Cleanroom version with HEPA filter, stainless steel outer housing	—	—	—
LED lighting strip mounted on the roof/on the side wall of the interior	optional/—	optional/—	optional/—
Flexible equipment is possible	✓	✓	✓
Plastic drawer	optional	optional	optional
Plastic drawer with roller runners	—	—	—
Aluminium drawer with roller runners	—	—	—
Stainless steel drawer with roller runners	—	—	—
Vario Support	—	—	—
Shelf	2	2	2
Shelf with overlays/rails	—/—	—/—	—/—
Wire basket with rails	—	—	—



LABO 288 ULTIMATE	LABO 340 ULTIMATE	LABO 468 ULTIMATE	LABO 520 ULTIMATE
LABO 288 PRO-ACTIVE	LABO 340 PRO-ACTIVE	LABO 468 PRO-ACTIVE	LABO 520 PRO-ACTIVE
Standard on all ULTIMATE, optional on all PRO-ACTIVE, not available on the ESSENTIAL			
√	√	√	√
280 l	330 l	460 l	500 l
approx. 0 to +15 °C	approx. 0 to +15 °C	approx. 0 to +15 °C	approx. 0 to +15 °C
220 - 240 V/50 and 60 Hz	220 - 240 V/50 and 60 Hz	220 - 240 V/50 and 60 Hz	220 - 240 V/50 and 60 Hz
√	√	√	√
34	38.5	75	60
0.58	0.46	0.80	0.77
from +10 °C to +38 °C	from +10 °C to +38 °C	from +10 °C to +38 °C	from +10 °C to +38 °C
123	152	197	269
net 71 kg/gross 83 kg	net 90 kg/gross 104 kg	net 113 kg/gross 127 kg	net 125 kg/gross 148 kg
67 x 72 x 132	67 x 66 x 189	74 x 77.5 x 189	77 x 76 x 195,5
52.7 x 39 x 92 (usable depth at the bottom 15 cm less)	52.7 x 39 x 116	59 x 50 x 116	59 x 45 x 129
67 x 130	67 x 124	74 x 142	74 x 144
-/52.7 x 39	50.4 x 32 x 5.6/ 52.7 x 39	-/59 x 50	-/59 x 45
16 kg/40 kg	16 kg/40 kg	24 kg/40 kg	-/40 kg
41 dB (A)	38.6 dB (A)	40 dB (A)	42 dB (A)
√	√	√	√
optional	optional	optional	optional
1.01 °C	0.54 °C	1 °C	1 °C
√	√	√	√
√	√	√	√
optional/-	optional/-	optional/-	optional/-
optional	optional	optional	√
-	-	-	optional
-	-	-	-
-	-	-	-
optional	optional	optional	optional
optional	optional	√	√
-	-	√	-
-	-	-	√
optional/-	-/optional	-/optional	-/optional
√	√	√	√
-	-	-	optional
optional	1 standard/optionally up to 12	optional	optional
optional	optional	-	optional
optional	-	-	optional
optional	optional	optional	optional
-	-	-	optional
3/optional	4/optional	4/optional	5/optional
-	-	optional	optional

Laboratory refrigerators and freezers

*compliant with DIN 13277



ULTIMATE	LABO 720 ULTIMATE	LABO 720 CHROMAT ULTIMATE	FROSTER LABO 330 ULTIMATE
PRO-ACTIVE	LABO 720 PRO-ACTIVE	LABO 720 CHROMAT PRO-ACTIVE	FROSTER LABO 330 PRO-ACTIVE
PC-KIT-NET			Standard on the ULTIMATE,
compliant with DIN 13277	✓	✓	–
Capacity	700 l	700 l	300 l
Temperature setting	approx. 0 to +15 °C	approx. +4 to +15 °C	approx. -10 to -30 °C
Voltage	220 - 240 V/50 and 60 Hz	220 - 240 V/50 and 60 Hz	220 - 240 V/50
Refrigerating machine for 60 Hz operation	✓	✓	optional
Power consumption (in watts)	60	60	590
Normal consumption (in kWh/24 h)	0.82	0.82	3,69
Permitted ambient temperature	from +10 °C to +38 °C	from +10 °C to +38 °C	from +10 °C to +32 °C
Heat emission (max. in watts)	269	269	693
Weight	net 141 kg/gross 167 kg	net 146 kg/gross 174 kg	net 125 kg/gross 142 kg
Exterior dimensions (incl. distance from wall and door handle) (W x D x H in cm)	77 x 98 x 195.5	77 x 98 x 195.5	74 x 77 x 166/74 x 77 x 159
Usable dimensions (W x D x H in cm)	59 x 65 x 129	59 x 65 x 129	57 x 42 x 80
Exterior dimensions with door open at 90° (W x D in cm)	77 x 165	77 x 165	74 x 141
Shelf inner dimensions (W x T in cm)	59 x 65	59 x 65	57 x 42
Maximum load: shelf	40 kg	40 kg	40 kg
Noise emission (for Ecool R600a in refrigerators)	42 dB (A)	42 dB (A)	51 dB (A)
Automatic defrost	✓	✓	✓
Defrost water container for manual draining	optional	optional	optional
Temperature deviation Δ T compliant with DIN 13277 without defrosting	0,86 °C	1.1 °C	2.0 °C
Re-circulating air cooling	✓	✓	✓
Alerts in case of power failure	✓	✓	✓
Glass door with lock	optional	✓	–
Equipped with castors	✓	✓	optional
External housing – chrome-nickel steel 4301	optional	optional	–
Refrigerating machine fan, built-in	✓	✓	✓
Cleanroom version with HEPA filter, stainless steel outer housing	–	✓	–
LED lighting strip mounted on the roof/on the side wall of the interior	–/optional	–/✓	optional/-
Flexible equipment is possible	✓	✓	✓
Plastic drawer with roller runners	optional	optional	–
Aluminium drawer with roller runners	optional	optional	optional
Stainless steel drawer with roller runners	optional	optional	optional
Vario Support	optional	optional	optional
Shelf with overlays/rails	5/optional	5/optional	4/optional
Wire basket with rails	optional	optional	optional



FROSTER LABO 530 ULTIMATE	FROSTER LABO 730 ULTIMATE
FROSTER LABO 530 PRO-ACTIVE	FROSTER LABO 730 PRO-ACTIVE
optional on the PRO-ACTIVE	
–	–
500 l	700 l
approx. -10 to -30 °C	approx. -10 to -30 °C
220 - 240 V/50 and 60 Hz	220 - 240 V/50 and 60 Hz
✓	✓
227	230
4,42	4,58
from +10 °C to +32 °C	from +10 °C to +32 °C
426	428
net 140 kg/gross 163 kg	net 157 kg/gross 183 kg
77 x 76 x 195.5	77 x 97 x 195.5
59 x 45 x 129	59 x 65 x 129
77 x 144	77 x 165
59 x 45	59 x 65
40 kg	40 kg
49 dB (A)	49 dB (A)
✓	✓
optional	optional
2.7 °C	2.0 °C
✓	✓
✓	✓
–	–
✓	✓
optional	optional
✓	✓
–	–
–/optional	–/optional
✓	✓
optional	optional
optional	optional
optional	optional
optional	optional
5/optional	5/optional
optional	optional



Display at eye-level

The display is positioned at eye-level to make it easier to read and use.



Easy access

The well thought-out opening mechanism makes it even simpler to equip our devices.



Self-closing door

Doors that are “open by accident” are a thing of the past.



Flexible arrangement

Gibs (every 15 mm) for flexible interior arrangement.

More information can be found on our website:

Laboratory refrigerators



Laboratory freezers



Explosion protection

Our promise - your safety!



KIRSCH was the first company in the laboratory cooling sector to adapt to the new ATEX product directive 2014/34/EU.

The interior of the devices is tested for absence of ignition sources by TÜV SÜD in conformity with Directive ATEX 2014/34/EU:

- All of the electrical equipment and components used in the interior (fans, temperature sensors, etc.) are specifically designed for use in zone 1* and zone 2
- We also guarantee the maximum temperature stability in explosion-proof interiors
- Intrinsically safe supply to the temperature sensors in the interior
- Explosion-proof fan
- Special earthing concept for discharging electrical potential
- Plastic parts in the interior have an antistatic design

(depending on the model)

*LABEX 465



Liability according to ATEX operator- and product guidelines

According to the ATEX operating directive, the plant operator is responsible for the correct selection of the equipment. For the determination of the suitable EX zone (e.g. Zone 1, Zone 2), following explosion hazards, among other things, have to be taken into consideration: the explosiveness of the stored substances and the frequency of occurrence of an explosive atmosphere.

We will gladly assist you in selecting the correct explosion protected device and provide you with the technical report of the TÜV-SÜD. You will find the declaration of conformity on our website: kirsch-medical.com/certificates/explosion-proofness.



LABEX®-Devices

Our LABEX® models are the safest explosion-proof devices on the market that offer maximum temperature stability.

INTRINSIC SAFETY



Protected probes

The probes are protected via safety barriers



Explosion-proof fan

energy limiting power supply

CONSTRUCTIVE SAFETY



Earthing concept

The user is grounded as soon as the door handle is touched. Static charge is discharged into the housing



No spark formation

caused by moving parts (shelves or conductive drawers)



i ZONE 1

For usage in more demanding environment and storage of highly flammable/explosive substances, we offer even safer unique Zone 1 devices. Though without of internal fan, the units offer remarkably good temperature homogeneity.

Laboratory refrigerators with an explosion-proof interior



ULTIMATE PRO-ACTIVE	– LABEX 105 PRO-ACTIVE	LABEX 288 ULTIMATE LABEX 288 PRO-ACTIVE	LABEX 340 ULTIMATE LABEX 340 PRO-ACTIVE
EX protection zone	2	2	2
PC-KIT-NET	Standard on all ULTIMATE, optional on all PRO-ACTIVE		
compliant with DIN 13277	–	✓	✓
Capacity	95 l	280 l	330 l
Temperature setting	approx. +2 to +15 °C	approx. 0 to +15 °C	approx. 0 to +15 °C
Voltage	220 - 240 V/50 and 60 Hz	220 - 240 V/50 and 60 Hz	220 - 240 V/50 and 60 Hz
Refrigerating machine for 60 Hz operation	✓	✓	✓
Power consumption (in watts)	30	40	50.3
Normal consumption (in kWh/24 h)	0.34	0.67	0.73
Permitted ambient temperature	from +10 °C to +38 °C	from +10 °C to +38 °C	from +10 °C to +38 °C
Heat emission (max. in watts)	100	127	160
Weight	net 46 kg, gross 55 kg	net 75 kg/gross 87 kg	net 95 kg/gross 109 kg
Exterior dimensions (incl. distance from wall and door handle) (W x D x H in cm)	54 x 54 x 82	67 x 72 x 132	67 x 66 x 189
Usable dimensions (W x D x H in cm)	43 x 36 x 43	52.7 x 39 x 92 (usable depth at the bottom 15 cm less)	52.7 x 39 x 116
Exterior dimensions with door open at 90° (W x D in cm)	54 x 106	67 x 130	67 x 124
Drawer/shelf inner dimensions (W x D x H in cm)	40.8 x 32 x 5.6/ 43 x 36	50.4 x 32 x 5.6/ 52.7 x 39	50.4 x 32 x 5.6/ 52.7 x 39
Maximum load: drawer/shelf	13 kg/25 kg	16 kg/40 kg	16 kg/40 kg
Noise emission (for Ecoool R600a)	44 dB (A)	41 dB (A)	38,6 dB (A)
Automatic defrost	✓	✓	✓
Defrost water container for manual draining	✓	✓	✓
Temperature deviation ΔT compliant with DIN 13277 without defrosting	5.71 °C	0.74 °C	1.32 °C
Re-circulating air cooling	–	✓	✓
Alerts in case of power failure	✓	✓	✓
Glass door with lock	optional	optional	optional
Equipped with castors	optional	optional	optional
External housing – chrome-nickel steel 4301	–	–	–
Tabletop	optional	–	–
Decorative frame	optional	optional	optional
Refrigerating machine fan, built-in	✓	optional	optional
Flexible equipment is possible	✓	✓	✓
Plastic drawer (standard/maximum)	1/3	–	–
Plastic drawer with roller runners, conductive (standard/maximum)	–	1/8	2/10
Shelf with overlays/rails	2/–	3/optional	4/optional



–	LABEX 468 ULTIMATE	LABEX 520 ULTIMATE	LABEX 720 ULTIMATE
LABEX 465 PRO-ACTIVE	LABEX 468 PRO-ACTIVE	LABEX 520 PRO-ACTIVE	LABEX 720 PRO-ACTIVE
1	2	2	2
Standard on all ULTIMATE, optional on all PRO-ACTIVE			
✓	✓	✓	✓
460 l	460 l	500 l	700 l
approx. 0 to +15 °C	approx. 0 to +15 °C	approx. 0 to +15 °C	approx. 0 to +15 °C
220 - 240 V/50 and 60 Hz	220 - 240 V/50 and 60 Hz	220 - 240 V/50 Hz	220 - 240 V/50 Hz
✓	✓	–	–
150	80	234	237
0.76	0.81	1.2	1.23
from +10 °C to +38 °C	from +10 °C to +38 °C	from +10 °C to +38 °C	from +10 °C to +38 °C
280	200	543	545
net 120 kg/gross 134 kg	net 120 kg/gross 134 kg	net 126 kg/gross 149 kg	net 143 kg/gross 169 kg
74 x 76 x 176	74 x 77.5 x 189	77 x 76 x 195.5	77 x 98 x 195.5
-/57 x 43 x 122	59 x 50 x 116	59 x 45 x 129	59 x 65 x 129
74 x 140	74 x 142	77 x 144	77 x 165
57 x 43 x 5.6	57.3 x 43 x 5.6/ 59 x 50	59 x 45	59 x 65
24 kg/40 kg	24 kg/40 kg	24 kg/40 kg	–/40 kg
40 dB (A)	40 dB (A)	42 dB (A)	42 dB (A)
✓	✓	✓	✓
✓	✓	✓	✓
3,38 °C	1 °C	0.9 °C	1 °C
✓	✓	✓	✓
✓	✓	✓	✓
optional	optional	optional	optional
optional	optional	✓	✓
–	–	optional	optional
–	–	–	–
optional	optional	optional	optional
✓	✓	✓	✓
✓	✓	✓	✓
–	–	–	–
optional	optional	optional	–
4/optional	6/optional	5/optional	5/optional

Laboratory freezers with an explosion-proof interior



ULTIMATE	–	–	FROSTER LABEX 330 ULTIMATE
PRO-ACTIVE	–	FROSTER LABEX 96 PRO-ACTIVE	FROSTER LABEX 330 PRO-ACTIVE
ESSENTIAL	ESSENTIAL FROSTER LABEX 71	–	–
EX protection zone	2	2	2
PC-KIT-NET	Standard on the ULTIMATE, optional on the PRO-ACTIVE,		
Capacity	70 l	95 l	300 l
Temperature setting	approx. -15 °C to -22 °C	approx. -5 °C to -25 °C	approx. -10 to -30 °C
Voltage	220 - 240 V/50 Hz	220 - 240 V/50 Hz	220 - 240 V/50 Hz
Refrigerating machine for 60 Hz operation	–	–	optional
Power consumption (in watts)	100	119	540
Normal consumption (in kWh/24 h)	1.6	1.36	4.33
Permitted ambient temperature	from +10 °C to +32 °C	from +10 °C to +32 °C	from +10 °C to +32 °C
Heat emission (max. in watts)	129	159	660
Weight	net 35 kg, gross 42 kg	net 50 kg, gross 59 kg	net 125 kg/gross 142 kg
Exterior dimensions (incl. distance from wall and door handle) (W x D x H in cm)	47 x 51 x 74	54 x 54 x 82	74 x 78 x 166/74 x 7 x 159
Usable dimensions (W x D x H in cm)	35 x 31 x 60 (usable depth at the bottom 15 cm less)	43 x 36 x 43	57 x 42 x 80
Exterior dimensions with door open at 90° (W x D in cm)	47 x 96	54 x 106	74 x 142
Shelf (W x D in cm)	35 x 20 (below), 35 x 31 (above)	43 x 36	57 x 42
Maximum load: drawer/shelf	–/25 kg	13 kg/25 kg	–/40 kg
Noise emission	39.9 dB (A)	38 dB (A)	51 dB (A)
Automatic defrost	–	–	✓
Defrost water container for manual draining	–	✓	✓
Temperature deviation Δ T compliant with DIN 13277 without defrosting	3.3 °C	3 °C	1.70 °C
Re-circulating air cooling	–	–	✓
Alerts in case of power failure	–	✓	✓
Equipped with castors	optional	optional	optional
External housing – chrome-nickel steel 4301	–	–	–
Tabletop	–	optional	–
Decorative frame	optional	optional	optional
Digital temperature display prepared for external installation into furniture front	–	✓	–
Refrigerating machine fan, built-in	optional	✓	✓
Flexible equipment is possible	–	✓	✓
Plastic drawer	–	optional	–
Plastic drawer with roller runners, conductive	–	–	–
Shelf	4	2	–
Shelf with overlays/rails	–/–	–/–	4/optional



FROSTER LABEX 530 ULTIMATE	FROSTER LABEX 730 ULTIMATE
FROSTER LABEX 530 PRO-ACTIVE	FROSTER LABEX 730 PRO-ACTIVE
—	—
2	2
not available on the ESSENTIAL	
500 l	700 l
approx. -10 to -30 °C	approx. -10 to -30 °C
220 - 240 V/50 Hz	220 - 240 V/50 Hz
optional	optional
550	534
5.8	6.68
from +10 °C to +32 °C	from +10 °C to +32 °C
717	706
net 141 kg/gross 164 kg	net 157 kg/gross 183 kg
77 x 76 x 195.5	77 x 97 x 195.5
59 x 45 x 129	59 x 65 x 129
77 x 144	77 x 166
59 x 45	59 x 65
24 kg/40 kg	-/40 kg
52 dB (A)	52 dB (A)
✓	✓
✓	✓
2 °C	2 °C
✓	✓
✓	✓
✓	✓
optional	optional
—	—
optional	optional
—	—
✓	✓
✓	✓
—	—
optional	—
—	—
5/optional	5/optional



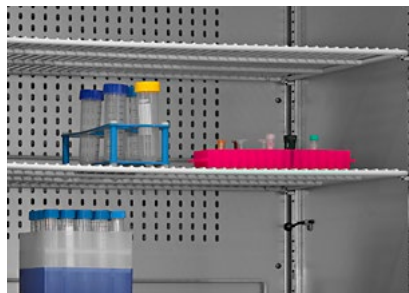
ATEX operating directive

In accordance with the ATEX operating directive, you as the system operator are responsible for the correct selection of your devices.



Intrinsic safety

Use of conductive, height-adjustable drawers with a variable interior arrangement.



Protected interior

A current discharge system prevents any static charges.



Explosion protection

The interior is free of ignition sources.

More detailed information are available on our website:

LABEX®
refrigerators



LABEX®
freezers



Conformity
statement



Temperature documentation with KIRSCH DATANET

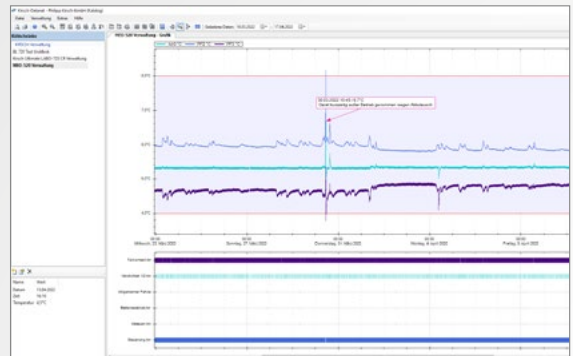
Maximum quality assurance for your chilled goods – complete and simply reliable

With KIRSCH-DATANET software the data from your devices (temperature curve, door openings, alarm history etc.) can be effortlessly recorded in your IT network. The network solution (PC-KIT-NET) is a standard feature of KIRSCH ULTIMATE product line and optional for the PRO-ACTIVE. Also older devices can be upgraded with this retrofittable solution.

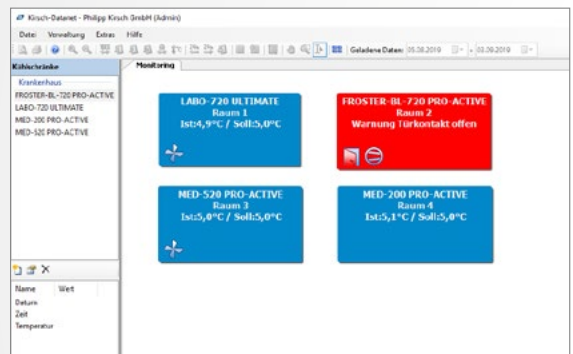
Kirsch DATALOG can be used for retrofitting the automatic temperature documentation and monitoring system on third party devices and devcies without an RS485 interface. It has limited range of function in compare with PC-KIT-NET

Your benefits

- Gapless temperature documentation
- Continuous monitoring
- Automatic alarm forwarding by e-mail
- Precise data evaluation and error analysis possibility, thanks to safely recorded refrigerator operating states
- Possibility to integration third-party devices
- No license fees for the software
- Minimal efforts required for documentation
- Refrigerator settings can be conveniently adjusted from the PC*
- User administration with configurable authorization levels
- Creation of user groups with user assignment possible



Graphical representation of the temperature curve with comment function and channel selection (e.g. compressor, door contact, defrost, general error and many more).



Monitoring overview of all integrated refrigerators and freezers. Malfunctions can be seen at a glance.

Index	Zeit	A/C	F/F2	F/F3	Eibwertung An	A/Niveau An
0058	22.03.2022 23:08:12	5,32°C	5,97°C	6,06°C	An	Aus
0059	22.03.2022 23:08:49	5,32°C	5,98°C	6,06°C	An	Aus
0060	22.03.2022 23:09:17	5,32°C	5,98°C	6,07°C	An	Aus
0061	22.03.2022 23:09:56	5,32°C	5,97°C	6,08°C	An	Aus
0062	22.03.2022 23:10:22	5,32°C	5,98°C	6,08°C	An	Aus
0063	22.03.2022 23:10:55	5,34°C	5,98°C	6,08°C	An	Aus
0064	22.03.2022 23:11:27	5,34°C	5,98°C	6,08°C	An	Aus
0065	22.03.2022 23:11:59	5,34°C	5,98°C	6,08°C	An	Aus
0066	22.03.2022 23:12:31	5,34°C	5,98°C	6,08°C	An	Aus
0067	22.03.2022 23:13:03	5,32°C	5,98°C	6,08°C	An	Aus
0068	22.03.2022 23:13:37	5,32°C	5,98°C	6,08°C	An	Aus
0069	22.03.2022 23:14:10	5,32°C	5,97°C	6,08°C	An	Aus
0070	22.03.2022 23:14:42	5,32°C	5,97°C	6,08°C	An	Aus
0071	22.03.2022 23:15:15	5,31°C	5,97°C	6,08°C	An	Aus
0072	22.03.2022 23:15:48	5,31°C	5,97°C	6,08°C	An	Aus
0073	22.03.2022 23:16:20	5,30°C	5,97°C	6,08°C	An	Aus
0074	22.03.2022 23:16:53	5,30°C	5,97°C	6,08°C	An	Aus
0075	22.03.2022 23:17:25	5,30°C	5,97°C	6,08°C	An	Aus
0076	22.03.2022 23:17:58	5,30°C	5,97°C	6,08°C	An	Aus
0077	22.03.2022 23:18:30	5,29°C	5,97°C	6,08°C	An	Aus
0078	22.03.2022 23:19:02	5,29°C	5,97°C	6,08°C	An	Aus
0079	22.03.2022 23:19:35	5,29°C	5,97°C	6,08°C	An	Aus

Tabular overview of all measurement points with exact temperature values. This view can also be conveniently exported as a CSV file.

*PC-KIT-NET



Service

Set-up service

We will be happy to help you with any questions you may have about setting up your temperature documentation system. We will also be happy to advise you on our KIRSCH-DATANET software solution and our KIRSCH EVOLUTION CLOUD.

We also offer software training for KIRSCH-DATANET so that you are familiar with all the functions and can configure and operate the software correctly.



We are happy to advise you.
+49 (0) 781 / 9227 0

Remote maintenance

With our Teamviewer, we offer you a platform for secure remote access and remote maintenance. This enables our experts to diagnose and solve problems or make adjustments without having to be at the location of the computer in question.

On-site instruction service

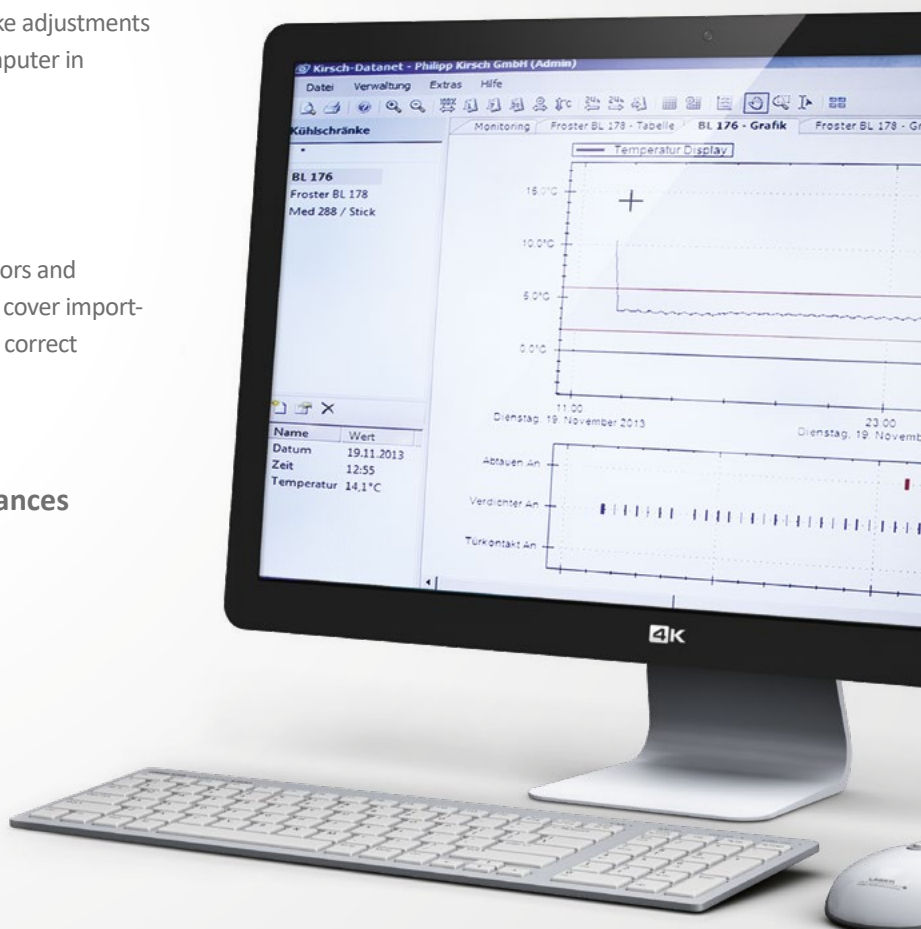
We teach you how to use your Kirsch refrigerators and freezers safely with our instruction service. We cover important points such as appliance design, operation, correct handling of alarms, cleaning and maintenance.

Qualification service for Kirsch appliances

IQ - Installation qualification
OQ - Operation qualification
PQ - Performance qualification

Our service - your benefit

- Fast response times
- Competent assistance
- Specialised personnel



Accessories

KIRSCH refrigerators and freezers provide numerous equipment options that can be retrofitted even at customer location.



KIRSCH EVOLUTION CLOUD-Modul

Maximum storage safety through optimal connectivity and real-time monitoring.



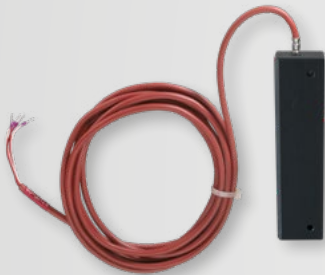
PC-KIT-NET

Automatic temperature documentation and monitoring via your network (LAN connection).



KIRSCH-DATALOG

Retrofitting the automatic temperature documentation and monitoring system on third party devices and devices without an RS485 interface.



External PT100/PT1000 with cold block

Additional temperature sensor for connection to existing/external monitoring system.



Access Port

Simple insertion of an external temperature sensor with integrated cable feed-through.



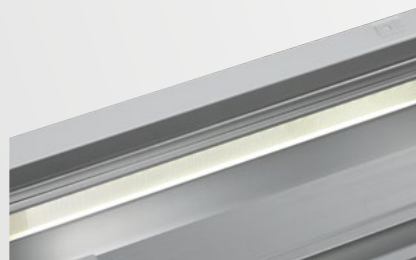
Clean room set

Enables operation in clean room thanks to special air guidance system of the cooling machine. 500/700 liter models also with HEPA filter.



Glass door with lock

See clearly: avoid opening the door unnecessarily to inspect the contents. Lockable.



Side wall/ceiling interior lighting

Optional, optimal and energy-efficient lighting for the interior using an LED light strip.



Equipped with castors

Equipped with steering and fixed castors. (depending on the model).



Vario Support

For comfortable and quick refilling.



Lockable drawer (top)

Protects sensitive goods from unauthorized access.



Wire shelves

Robust shelves with a load capacity of up to 40 and 50 kg.



Additional cooling machine fan

Is required when the on-site ventilation of the cooling machine is not sufficient (built-in device). Please see installation drawing.



Door coupling

Connects the furniture door to the device door.



Decorative frame

Made of stainless steel, allows to cover door with a decorative panel (thickness max. 2 mm).



Used in more than 100 countries



Philipp Kirsch GmbH
Im Lossenfeld 14
77731 Willstätt
Germany

Phone: +49 (0) 781 9227-0
Telefax: +49 (0) 781 9227-200
info@kirsch-medical.com

www.kirsch-medical.com



Photograph this QR code
and learn
about our entire
product range.