

MED 126 PRO-ACTIVE

according to DIN 13277

Equipment

- Can be built in and underneath
- Key switch
- 3 drawers and 1 shelf
- Forced air cooling
- Antifreeze
- Automatic defrosting
- Condensate evaporation
- Digital temperature display
- Potential-free contact
- Connection option for alarm transmission
- Visual and audible alarm signal, even in the case of power failure

**MADE IN
GERMANY**



PRO-ACTIVE-Features

- Faster response time in the event of impending faults thanks to proactive alarms
- Data recording can be read out via USB interface using a USB stick and software
- Minimisation of temperature deviations in the interior
- Maximum storage safety thanks to harmonised components



- **PRO-ACTIVE-Control:** Permanent, proactive monitoring of the performance data and alerts in the case of deviations. World's most accurate temperature control in refrigerated areas thanks to two standard PT-1000 sensors.
- **External housing** made from galvanised sheet steel (rustproof), with white, anti-scratch powder coating. Length of plug cable: approx. 2.8 m.
- **Adjustable feet** positioned at the front to compensate uneven floors
- **Interior made from** impact-resistant, white plastic with moulded-in shelves.
- **Interior** can be customised (surcharge may apply). See optional equipment.
- **Extra-thick insulation**, made from high-quality, compression-moulded and environmentally friendly material. Energy saving.
- **Door** with easy-to-replace plastic magnetic seal frame, lockable.
- **Door hinge** on the right-hand side (by default, see illustration), or the left-hand side, can be retrofitted.
- **Forced air cooling**, switches off automatically when you open the door, ensures a uniform temperature and reduces temperature reductions to a minimum.
- **Automatic defrosting** with time limit and temperature monitoring.
- **Condensate evaporation** in the refrigerating machine interior.
- **Key switch** protected control panel against tampering. Membrane keyboard with digital temperature display and minimum/maximum temperature memory.
- **Electronic temperature control** with membrane keyboard and digital temperature display in the interior.
- **Warning functions:** visual and audible alarm signal, even in the case of temperature deviations and power failure. Door open alarm after 60 seconds.
- **Alarms** can be forwarded via email or SMS using the Kirsch EVOLUTION CLOUD Module (optional).
- **Antifreeze** against sub-zero temperatures.
- **Data documentation** can be read via USB interface with KIRSCH Datanet software.
- **Statically ventilated refrigerating machine**, hermetically sealed, energy saving, low noise, easy to service.

Specification

Capacity	120 litres
Temperature setting	approx. +2 °C to +15 °C
Voltage	220 – 240 V, 50/60 Hz
Power consumption	110 watts
Normal consumption	0.78 kWh/24 h
Admissible ambient temperature	from +10 °C to +38 °C
Heat emission (max.)	153 watts
Overall dimensions (including distance from wall)	w x d x h = 54 x 53.5 x 89 cm
Usable dimensions	w x d x h = 40,8 x 32 x 59 cm *
Exterior dimensions with door open at 90°	w x d = 54 x 105.5 cm
Shelf size	43.8 x 24 cm
Drawer innerm dimensions	w x d x h = 40.8 x 32 x 5.6 cm
Max. load: drawer/shelf	13 kg/25 kg
Weight (net/gross)	47 kg / 57 kg
Temperature deviation	+/-1.14 °C
Noise emission	38.5 dB(A)

*(usable depth below: 15 cm less)

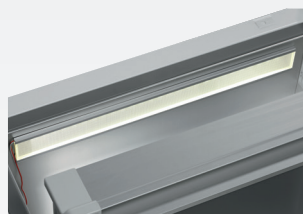
Optional equipment

KIRSCH refrigerators and freezers offer numerous equipment options that can be retrofitted.



Lockable drawer (top)

Protects special refrigerated goods from unauthorised access.



Interior lighting, ceiling

Optional, optimal and energy-efficient lighting for the interior using an LED lightstrip.



Additional length and cross dividers

for the optimum organisation of your refrigerated goods.



Additional Shelves

Wire shelves, robust with load capacity up to 40 and 50 kg.



Access Port

Simple insertion of an external temperature sensor with integrated cable feed-through.



Castors

Can be equipped with steering and fixed castors.



Door coupling

Connects the furniture door to the device.



Decorative frame

Made of stainless steel, allows to cover door with a decorative panel (thickness max. 2 mm).



Condensation tray

for manual disposal of condensation water.

Equipment for temperature documentation



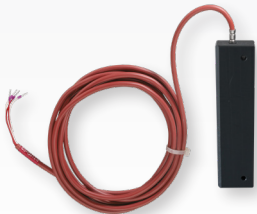
PC-KIT-NET

Automatic temperature documentation and monitoring via your network (LAN connection).



KIRSCH EVOLUTION CLOUD-Module

Maximum storage safety through optimal connectivity and real-time monitoring. *



External PT100/PT1000 with cold block

Additional temperature sensor for connection to existing/external monitoring system.



Circular blade temperature recorder

Depending on the model, it is either installed in the machine compartment panel of the refrigerator or freezer or integrated into an additional housing attachment.

* For more information about our cloud, please contact us.

Philipp Kirsch GmbH
Im Lossenfeld 14
77731 Willstätt

Telefon: +49 (0) 781 9227-0
Telefax: +49 (0) 781 9227-200
info@kirsch-medical.de

www.kirsch-medical.com



You can find our complete product overview on our website:
www.kirsch-medical.com