

# LABO 720 CHROMAT ULTIMATE

according to DIN 13277

## Equipment

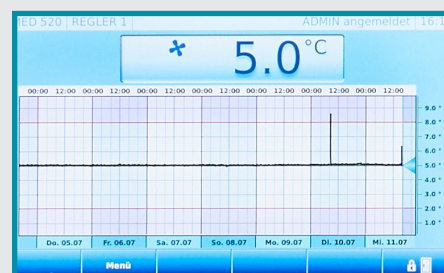
- 5 shelves
- 3 Moisture-proof sockets
- Forced-air cooling
- Cable pass-through
- LED-illumination
- Comfortable access
- Automatic defrosting
- Condensate evaporation
- potential-free contact
- Antifreeze
- Equipped with castors
- Visual and audible alarm signal, even in the case of power failure
- Minimum/maximum temperature memory



**MADE IN  
GERMANY**

## ULTIMATE-Features

- Touch display, capacitive, elegant glass design
- Graphic display of the temperature curve with logbook function
- Access control via password entry or RFID possible
- PC-KIT-NET for temperature documentation and monitoring via LAN

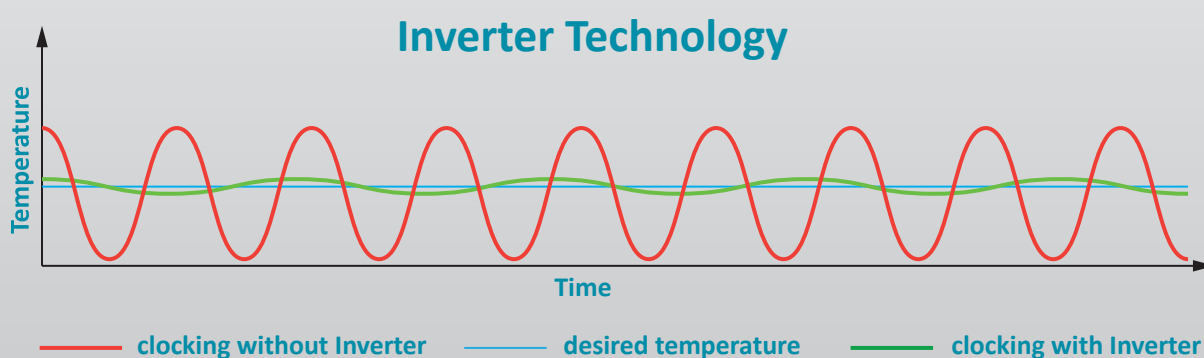


## Compressor with inverter technology

- Environmentally friendly natural refrigerant R600a.  
Very low GWP value = 3 (Global Warming Potential)
- Reduction in power consumption by 44 % compared to the previous model (power consumption = 0,82 kWh/24h)
- Extended service life due to demand-orientated power adjustment
- Frequency: 50/60 Hz

If you need further support or have any questions,  
please contact us.

**info@kirsch-medical.de**  
**+49 (0)781 - 9227 0**



- **PRO-ACTIVE- Control:** Permanent, proactive monitoring of the performance data and alerts in the case of deviations. World's most accurate temperature control in refrigerated areas thanks to two standard PT-1000 sensors.
- **Touch-Display,** elegant glass design, capacitive.
- **Access control** with protocol.
- **Graphical display** of the temperature curve and min/max temperature
- **External housing** made from galvanised sheet steel (rust-proof), with white, anti-scratch powder coating. Length of the plug cable: approx. 3 m.
- **Equipped with castors.**
- **Interior** made from smooth aluminium with colourless protective coating. Gibs (every 15mm) for flexible interior arrangement.
- **Interior** can be customised (surcharge may apply). See optional equipment.
- **Extra-thick energy saving insulation,** made from high-quality, compression-moulded and environmentally friendly material.
- **Self-closing door** with easy-to-replace plastic magnetic seal frame, lockable.
- **Door hinge** on the right-hand side (by default, see illustration), or the left-hand side, can be retrofitted.
- **Forced-air cooling,** switches off automatically when you open the door, ensures a uniform temperature and minimizes temperature deviations.
- **3 moisture-proof sockets** mounted in the interior.
- **LED-illumination** mounted on side wall. Permanent lighting can be switched-on over a button at the control panel.
- **The cable pass-through** in the right side wall (75 mm diameter) allows easy connection to devices.
- **Automatic fast defrosting** thanks to time-limited and temperature-monitored reversal of the refrigerant circuit.
- **Condensate evaporates** in stainless steel heated dish beneath the refrigerator floor.
- **Warning functions** with visual and audible alarm signal in the case of temperature deviations or other malfunctions. Door open alarm after 60 seconds.
- **Power failure alarm** (visual and audible alarm), the monitoring unit remains in operation for approx. 30 hours on battery power.
- **Alarms** can be forwarded using a potential-free contact (e.g., to a mobile phone with optional KIRSCH EVOLUTION CLOUD or to a control centre).
- **Digital data documentation** readable via PC-KIT-NET or USB interface and software KIRSCH Datanet.
- **Antifreeze** against sub-zero temperatures.
- **Ventilation-enforced refrigerating machine,** hermetically sealed, energy saving, low-noise, easy to service.
- **Low-noise compressor** reduces noise.

## Specification

Capacity	700 litres
Temperature setting	approx. +0 °C to +15 °C
Voltage	220 – 240 V, 50/60 Hz
Power consumption	60 watts
Normal consumption	0.82 kWh/24 h
Admissible ambient temperature	from +10 °C to +38 °C
Heat emission (max.)	554 watts
Exterior dimensions (including door handle and distance from wall)	w x d x h = 77 x 98 x 195.5 cm
Useable dimensions	w x d x h = 59 x 65 x 129 cm
Exterior dimensions with door open at 90°	w x d = 77 x 165 cm
Shelf size	w x d = 59 x 65 cm
Max. load shelf	40 kg
Weight (net/gross)	146 kg / 174 kg
Temperature deviation	+/-0.6 °C
Noise emission	46 dB(A)

## Optional equipment

KIRSCH refrigerators and freezers offer numerous equipment options that can be retrofitted.



### Levelling feet

Levelling feet instead of castors.



### Additional length and cross dividers

for the optimum organisation of your refrigerated goods.



### Plastic-drawer on runners

Up to 12 drawers are possible in total.



### Additional Shelves

Wire shelves, robust with load capacity up to 40 and 50 kg.



### Vario Support

Storage shelf on castors.

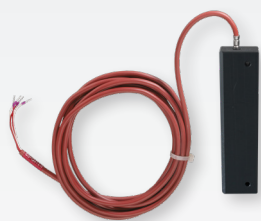


### Access Port

Simple insertion of an external temperature sensor with integrated cable feed-through.

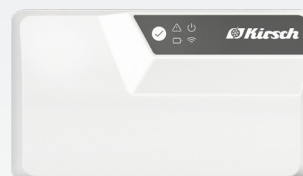


## Accessories for temperature documentation



### External PT100/PT1000 with cold block

Additional temperature sensor for connection to existing/external monitoring system.



### KIRSCH EVOLUTION CLOUD-Module

Maximum storage safety through optimal connectivity and real-time monitoring.

\* For more information about our cloud, please contact us.



### Philipp Kirsch GmbH

Im Lössenfeld 14  
77731 Willstätt  
Germany

Phone: +49 (0) 781 9227-0  
Telefax: +49 (0) 781 9227-200  
info@kirsch-medical.com

[www.kirsch-medical.com](http://www.kirsch-medical.com)



Photograph this QR code and learn about our entire product range.