

FROSTER BL 330 ULTIMATE

according to DIN 13277

Equipment

- Forced-air cooling
- 4 drawers
- Automatic fast defrosting
- Door frame heater
- Condensate evaporation
- Potential-free contact
- Comfortable access
- Visual and audible alarm signal
- Minimum/maximum temperature memory

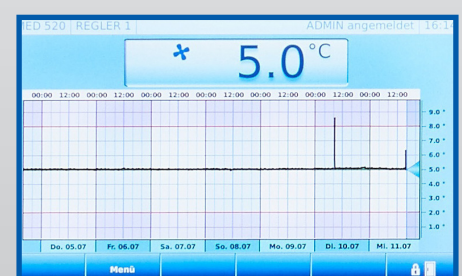
**MADE IN
GERMANY**

CE 0483



ULTIMATE-Features

- Touch display, capacitive, elegant glass design
- Graphic display of the temperature curve with logbook function
- Access control via password entry or RFID possible
- PC-KIT-NET for temperature documentation and monitoring via LAN

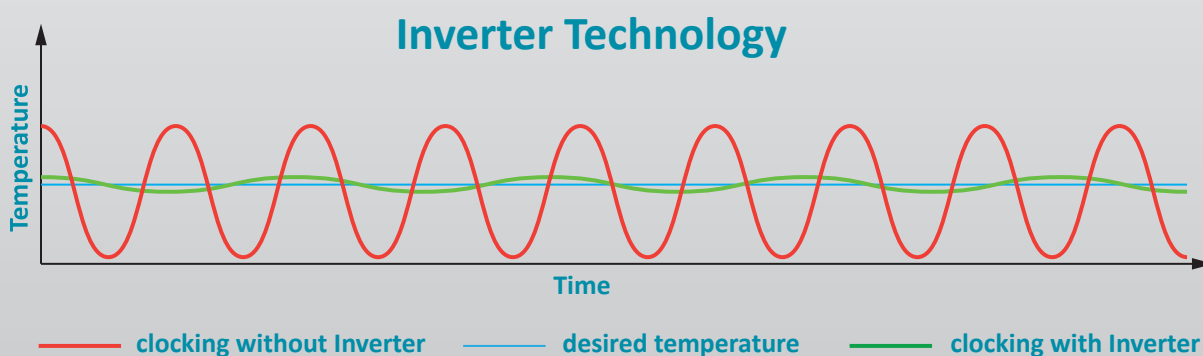


Compressor with inverter technology

- Environmentally friendly natural refrigerant R290.
Very low GWP value = 3 (Global Warming Potential)
- Reduction in power consumption by 31 % compared to the previous model (power consumption = 4.55 kWh/24h)
- Extended service life due to demand-orientated power adjustment
- Frequency: 50/60 Hz

If you need further support or have any questions, please contact us.

info@kirsch-medical.de
+49 (0)781 - 9227 0



- **PRO-ACTIVE- Control:** Permanent, proactive monitoring of the performance data and alerts in the case of deviations. World's most accurate temperature control in refrigerated areas thanks to two standard PT-1000 sensors.
- **Touch Display,** elegant glass design, capacitive.
- **Access control** with protocol.
- **Graphical display** of the temperature curve and min/max temperature.
- **External housing** made from galvanised sheet steel (rust-proof), with white, anti-scratch powder coating. Length of the plug cable: approx. 2.8 m.
- **Adjustable feet** to compensate for uneven floors.
- **Interior** made from smooth aluminium with colourless protective coating. Gibs (every 15 mm) for flexible interior arrangement.
- **Interior** can be customised (surcharge may apply). See optional equipment.
- **Extra-thick insulation,** made from high-quality, compression-moulded and environmentally friendly material. Energy saving.
- **Self-closing door** with easy-to-replace plastic magnetic seal frame, lockable.
- **Door stop** on the right-hand side (by default, see illustration), or the left-hand side, can be retrofitted.
- **Forced-air cooling,** switches off automatically when you open the door, ensures a uniform temperature and minimizes temperature deviations.
- **Automatic fast defrosting** thanks to time-limited and temperature-monitored reversal of the refrigerant circuit.
- **Condensate evaporates** in stainless steel heated dish beneath the refrigerator floor.
- **Electronic temperature control.** Tamper-proof by RFID/ password with digital display and temperature memory.
- **Warning functions** with visual and audible alarm signal in the case of power failure and temperature deviations. In the case of power failure, the monitoring unit remains in operation for approx. 30 hours on battery power. Door open alarm after 60 seconds.
- **Alarms** can be forwarded via email or SMS using the Kirsch EVOLUTION CLOUD Module (optional).
- **Digital data documentation** readable via PC-KIT-NET or USB interface and software KIRSCH Datanet.
- **Ventilation-enforced refrigerating machine,** vibration free, hermetically sealed, energy saving, low-noise, easy to service.
- **Door frame heater** prevents icing of the door.

Specifications

Capacity	300 litres
Temperature setting	-32 °C
Voltage	220 – 240 V, 50/60 Hz
Power consumption	286 watts
Normal consumption	4.55 kWh/24 h
Admissible ambient temperature	from +10 °C to +32 °C
Heat emission (max.)	1090 watts
Exterior dimensions (including door handle and distance from wall)	w x d x h = 74 x 77 x 166 cm
Usable dimensions	w x d x h = 53 x 42 x 74 cm
Exterior dimensions with door open at 90°	w x d = 74 x 142 cm
Drawer inner dimensions	w x d x h = 53 x 42 x 10 cm
Max. load drawer	50 kg
Weight (Net/gross)	137 kg/151 kg
Temperature deviation without defrosting	+/-0.75 °C
Noise emission	51.1 dB(A)

Optional equipment

KIRSCH refrigerators and freezers offer numerous equipment options that can be retrofitted.



Castors

Can be equipped with steering and fixed castors.



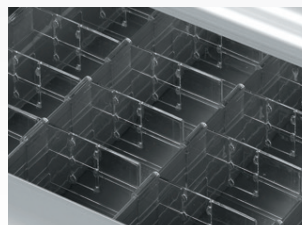
Decorative frame

Made of stainless steel, allows to cover door with a decorative panel (thickness max. 2 mm).



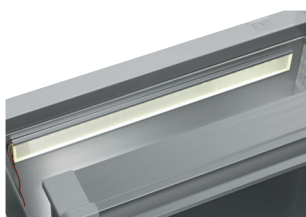
Aluminium or stainless steel drawers on rollers

Up to four drawers are possible in total.



Additional length and cross dividers

for the optimum organisation of your refrigerated goods.



Interior lighting, ceiling

Optional, optimised and energy-efficient illumination of the interior via LED light strip.



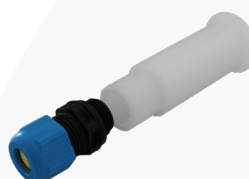
Additional shelves

Wire shelves, robust with load capacity up to 40 and 50 kg.



Vario support

Storage shelf on castors.



Access port

Simple insertion of an external temperature sensor with integrated cable feed-through.



Door coupling

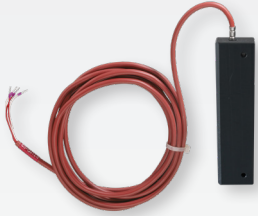
Connects the furniture door to the device.



Condensation tray

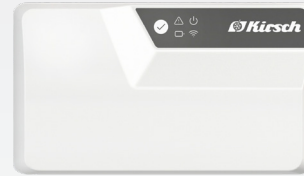
for manual draining of condensation water.

Accessories for temperature documentation



External PT100/PT1000 with cold block

Additional temperature sensor for connection to existing/external monitoring system.



KIRSCH EVOLUTION CLOUD-Module

Maximum storage safety through optimal connectivity and real-time monitoring.

* For more information about our cloud, please contact us.



Philipp Kirsch GmbH

Im Lossenfeld 14
77731 Willstätt
Germany

Phone: +49 (0) 781 9227-0
Telefax: +49 (0) 781 9227-200
info@kirsch-medical.com

www.kirsch-medical.com



Photograph this QR code and learn about our entire product range.