

BL 720 ULTIMATE

according to DIN 13277

Equipment

- Forced-air cooling
- 5 aluminium drawers
- Automatic defrosting
- Equipped with castors
- Condensate evaporation
- Potential-free contact
- Comfortable access
- Antifreeze
- Minimum/maximum temperature memory
- Visual and audible alarm signal, even in the case of power failure

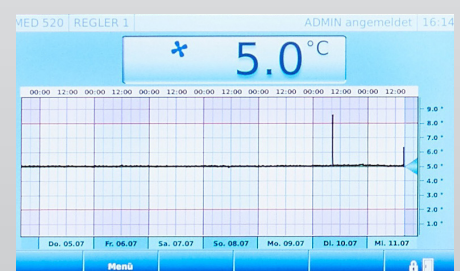
**MADE IN
GERMANY** **CE** 0483



**Interior may differ visually*

ULTIMATE-Features

- Touch display, capacitive, elegant glass design
- Graphic display of the temperature curve with logbook function
- Access control via password entry or RFID possible
- PC-KIT-NET for temperature documentation and monitoring via LAN



- **PRO-ACTIVE- Control:** Permanent, proactive monitoring of the performance data and alerts in the case of deviations. World's most accurate temperature control in refrigerated areas thanks to two standard PT-1000 sensors
- **Touch Display,** elegant glass design, capacitive.
- **Access control** with protocol.
- **Graphical display** of the temperature curve and min/max temperature.
- **External housing** made from galvanised sheet steel (rust-proof), with white, anti-scratch powder coating. Length of the plug cable: approx. 3 m.
- **Equipped with castors.**
- **Interior made from** smooth aluminium with colourless protective coating. Gibs (every 15 mm) for flexible interior arrangement.
- **Interior** can be customised (surcharge may apply). See optional equipment.
- **Extra-thick insulation,** made from high-quality, compression-moulded and environmentally friendly material. Energy saving.
- **Self-closing door** with easy-to-replace plastic magnetic seal frame, lockable.
- **Door stop** on the right-hand side (by default, see illustration), or the left-hand side, can be retrofitted.
- **Forced-air cooling,** with axial blower, switches off automatically when you open the door, ensures a uniform temperature and minimizes temperature deviations.
- **Automatic fast defrosting** thanks to time-limited and temperature-monitored reversal of the refrigerant circuit.
- **Condensate evaporation** in stainless steel heated dish beneath the refrigerator floor.
- **Electronic temperature control,** tamper-proof by RFID/pass-word with digital display and temperature memory.
- **Power failure alarm** (visual and audible alarm), the monitoring unit remains in operation for approx. 30 hours on battery power.
- **Warning functions** with visual and audible alarm signal in the case of temperature deviations or other malfunctions. Door open alarm after 60 seconds.
- **Alarms** can be forwarded via email or SMS using the Kirsch EVOLUTION CLOUD Module (optional).
- **Digital data documentation** readable via PC-KIT-NET or USB interface and software KIRSCH Datanet.
- **Antifreeze** against sub-zero temperatures.
- **Ventilation-enforced refrigerating machine,** vibration free, hermetically sealed, energy saving, low-noise, easy to service.
- **Low-noise compressor** reduces noise.

Specification

Capacity	700 litres
Temperature setting	+4 °C
Voltage	220 – 240 V, 50/60 Hz
Power consumption	60 watts
Normal consumption	0.81 kWh/24 h
Admissible ambient temperature	from +10 °C to +38 °C
Heat emission (max.)	554 watts
Exterior dimensions (including door handle and distance from wall)	w x d x h = 77 x 98 x 195.5 cm
Usable dimensions	w x d x h = 56 x 60,5 x 129 cm
Exterior dimensions with door open at 90°	w x d = 83 x 166 cm
Drawer inner dimensions	w x d x h = 56 x 60.5 x 10 cm
Max. load drawer	50 kg
Weight (net/gross)	164 kg/190 kg
Temperature deviation	+/-0.75 °C
Noise emission	47,7 dB(A)

Optional equipment

KIRSCH refrigerators and freezers offer numerous equipment options that can be retrofitted.



Glass door with lock

Transparency: avoid opening the door unnecessarily to inspect the contents. Lockable.



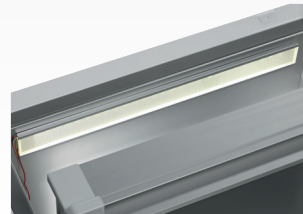
Additional Shelves

Wire shelves, robust with load capacity up to 40 and 50 kg.



Door coupling

Connects the furniture door to the device.



Interior lighting, side wall

Optional, optimal and energy-efficient lighting for the interior using an LED lightstrip.



Decorative frame

Made of stainless steel, allows to cover door with a decorative panel (thickness max. 2 mm).



Condensation tray

For manual draining of condensation water.



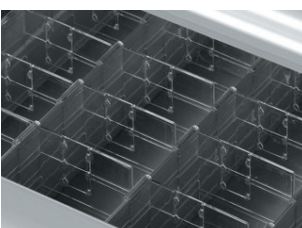
Access Port

Simple insertion of an external temperature sensor with integrated cable feed-through.



Levelling feet

Levelling feet instead of castors.



Additional length and cross dividers

For the optimum organisation of your refrigerated goods.



Drawers on runners

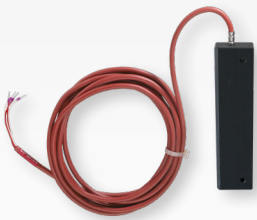
Up to eight drawers are possible in total.



Vario Support

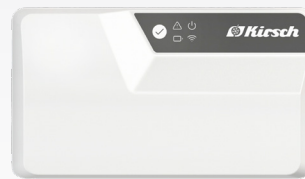
Storage shelf on roller runners.

Accessories for temperature documentation



External PT100/PT1000 with cold block

Additional temperature sensor for connection to existing/external monitoring system.



KIRSCH EVOLUTION CLOUD-Module

Maximum storage safety through optimal connectivity and real-time monitoring. *

* For more information about our cloud, please contact us.

Philipp Kirsch GmbH

Im Lossenfeld 14
77731 Willstätt

Telefon: +49 (0) 781 9227-0
Telefax: +49 (0) 781 9227-200
info@kirsch-medical.de

www.kirsch-medical.com



You can find our complete product overview on our website:
www.kirsch-medical.com